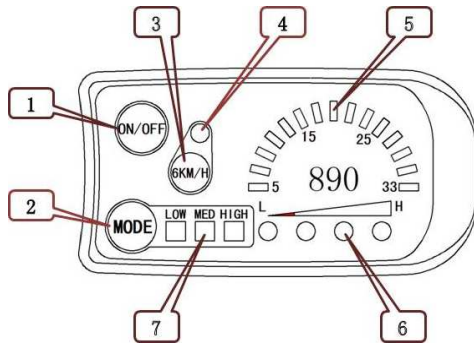


Dear users, please read this guide carefully before you use KT-LED890 instrument. The manual will guide you use the instrument correctly to achieve a variety of vehicle control and vehicle status display.

Functions and Display



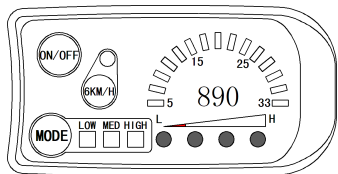
1	Operation button	ON/OFF Button	5	Speed indicator dial	15 LED indicator
2		MODE Button	6	Battery capacity indicator	4 LED indicator
3		6KM/H Button	7	Power ratio gear	Gear3 LED indicator
4	LED indicator	6KM/H boost function			

Operation

1. ON/OFF

Hold **ON/OFF** button long to startup; hold **ON/OFF** button long for a second time to turn off the meter. When the motor stops driving and when the meter is not used for a consecutive 5 minutes, it will automatically shut down and turn off the motor power supply.

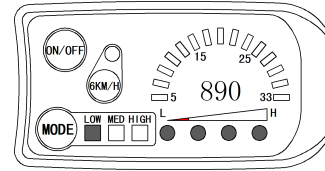
2. Boot display interface



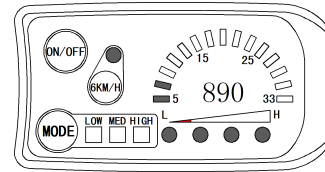
Hold **ON/OFF** button long to startup and enter boot display interface.

2.1 Assist ratio gear switch

Hold **MODE** button shortly to switch 1-3 file gear, LOW is for the minimum power gear, MED is for the middle power gear, and HIGH is for the highest power gear. Each startup will automatically restore the gear shutdown last time. Gear 0 (the indicators of three gears are off) is without power assist function.

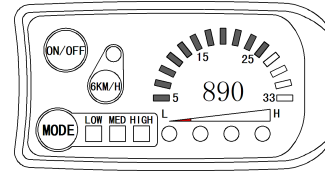


2.2 6KM/H boost function



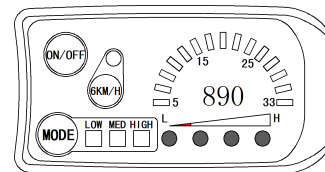
Hold **6KM/H** button and LED indicator flashes, the vehicle drives at the speed should be no more than 6Km/h. Release **6KM/H** button, the function is invalid.

2.3 Speed display



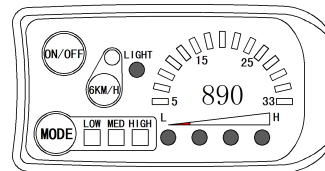
15 LED speed indicator dial shows real-time display of current vehicle speed.

2.4 Power display



When battery power capacity is greater than 80%, all 4 LED indicator are lit. When the battery capacities drop, the indicators are off in order. When the power capacity is less than 20%, the last indicator is flashing (L side). When the controller is under-voltage protection, all 4 LED indicators are power off, which means that the vehicle is currently shutdown due to low voltage.

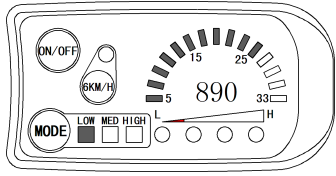
2.5 Startup headlights (Optional)



Hold **MODE** button long to startup the lights (the controller should have the function of headlight driving output or built-in meter headlight driving output function), LIGHT indicator lights. Hold **MODE** button again to turn off vehicle headlights, and the LIGHT indicator is turned off.

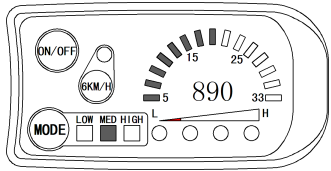
General Project Setting

1. Maximum trip speed setting



After power on for 5 seconds, hold **ON/OFF** button and **MODEL** button at the same time, LOW indicator and LED indicator of speed indicator dial at power assist ratio gear flash. Hold **ON/OFF** button or **MODEL** button shortly to set the maximum trip speed (default 25Km/H). and hold **6KM/H** shortly to enter into the next parameter settings.

2. Wheel diameter setting



After finishing setting the maximum trip speed, enter the wheel diameter setting interface, and then MED indicator and LED indicator of speed indicator dial flash at power assist ratio gear. Hold **ON/OFF** button or **MODEL**

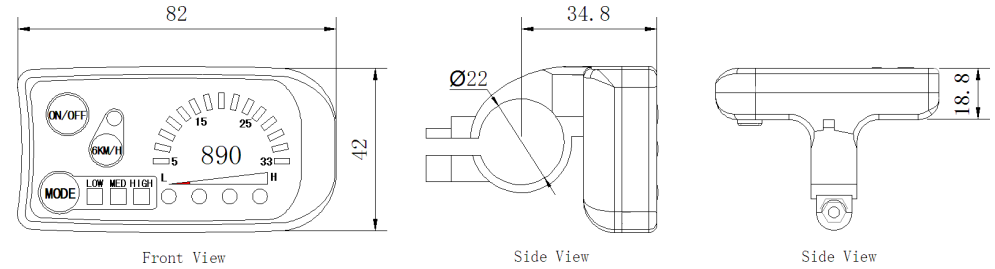
button shortly to set the specification of wheel diameter (default 26 inches), and the setting ranges are 12, 14, 16, 18, 20, 22, 24, 26, 700 c and 28 inches (From left to right, the corresponding wheel diameter of the speed indicator dial of the first LED indicator is 12inches, and 14inches for the second LED indicator and so on). Hold **6KM/H** button shortly to enter into the next parameter settings.

3. Exit general project setting

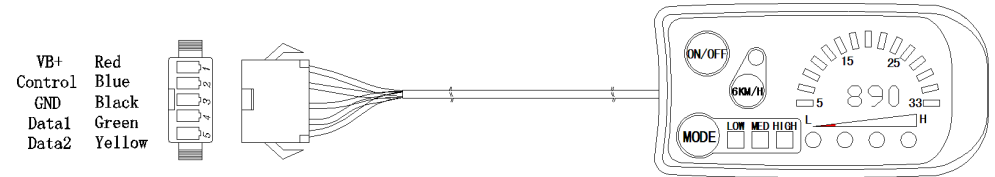
In the two general project settings, after each setting is completed, if hold **MODE** button long, all can exit the setting environment, meanwhile, the set parameters are saved.

Under each setting interface, if there's no button operation on the meter for more than 1 minute, then the meter will automatically exit the setting environment, and the set values are invalid accordingly.

1. Meter dimension



2. Wiring schematic



Outlook and Size